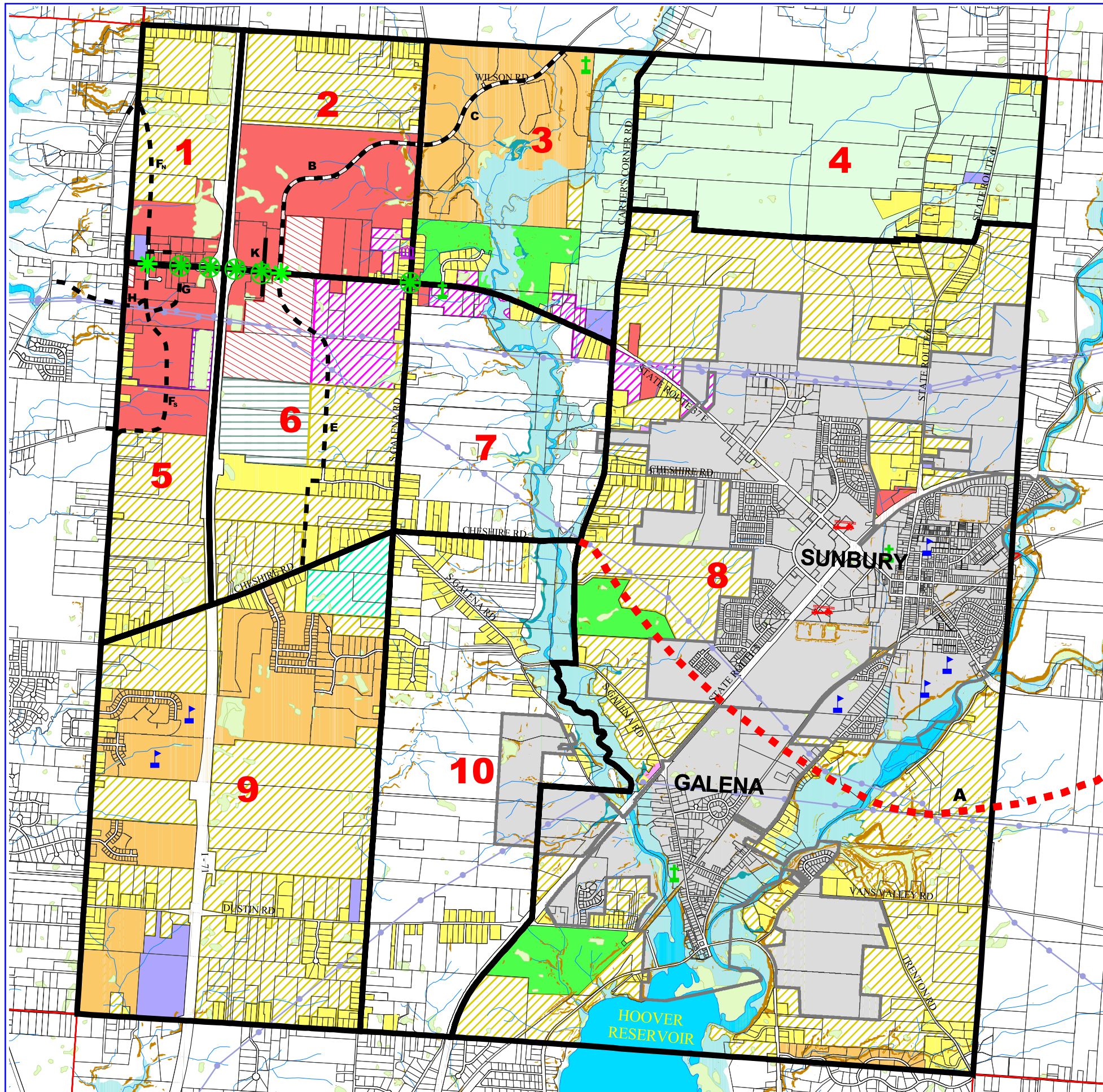
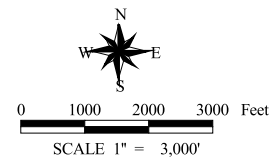


**BERKSHIRE TOWNSHIP  
COMPREHENSIVE LAND USE PLAN 2008  
DELAWARE COUNTY, OHIO**  
Adopted 8/11/2008



- Township Hall
- Fire Department
- Cemeteries
- Schools
- Proposed Signal
- Existing Signal
- Planning Subareas
- Township Boundaries
- Incorp. Area Boundaries
- Power Lines
- Power Poles
- Railroad
- Road Right of Way
- Property Lines
- Slope
  - Slope < 20%
  - Slope > 20%
- Streams
- Ponds/Rivers/Lakes
- Wetland (National Wetland Inventory)
- 100-Year Flood Plain
- 500-Year Flood Plain
- Incorp. Area Boundaries
- Berkshire Township Zoning
  - Agricultural District (A-1)
  - Farm Residential District (FR-1)
  - Planned Residential District (PRD)
  - Planned Recreational District (PRCD)
  - Planned Institutional District (PIND)
  - Planned Commercial & Office District (PCD)
  - Planned Industrial District (PID)
  - River
  - Road
  - Village of Sunbury
  - Village of Galena
  - PERRC - Planned Elderly Retirement Residential Community
  - PCSRD - Planned Conservation Residential District
  - PFRD - Planned Floodplain Regulatory District
  - Proposed Roads
  - Thoroughfare Plan Proposed Roads
- Proposed Land Use
  - Agricultural Heartland or Single Family at 1 unit / 5 acres
  - Single Family at 1 unit / 2 acres
  - Single Family at 1 unit / 2 acres without Sewer or 1.25 du/ac with Centralized Sewer
  - Planned Commercial
  - Planned Office
  - Planned Commercial or Office
  - Planned Industrial
  - Potential Township Park



Prepared by: Delaware County Regional Planning Commission (740-833-2260)  
<http://www.dcrpc.org>  
 Original Data Provided by The Delaware County Auditor's Office DALIS Project  
 (Topo, Parcel, ROW, Municipal Boundary, Road Centerlines, Hydrology,  
 Township Boundary, Floodplains) (740-833-2070);  
 (Printed 11/12/2008)