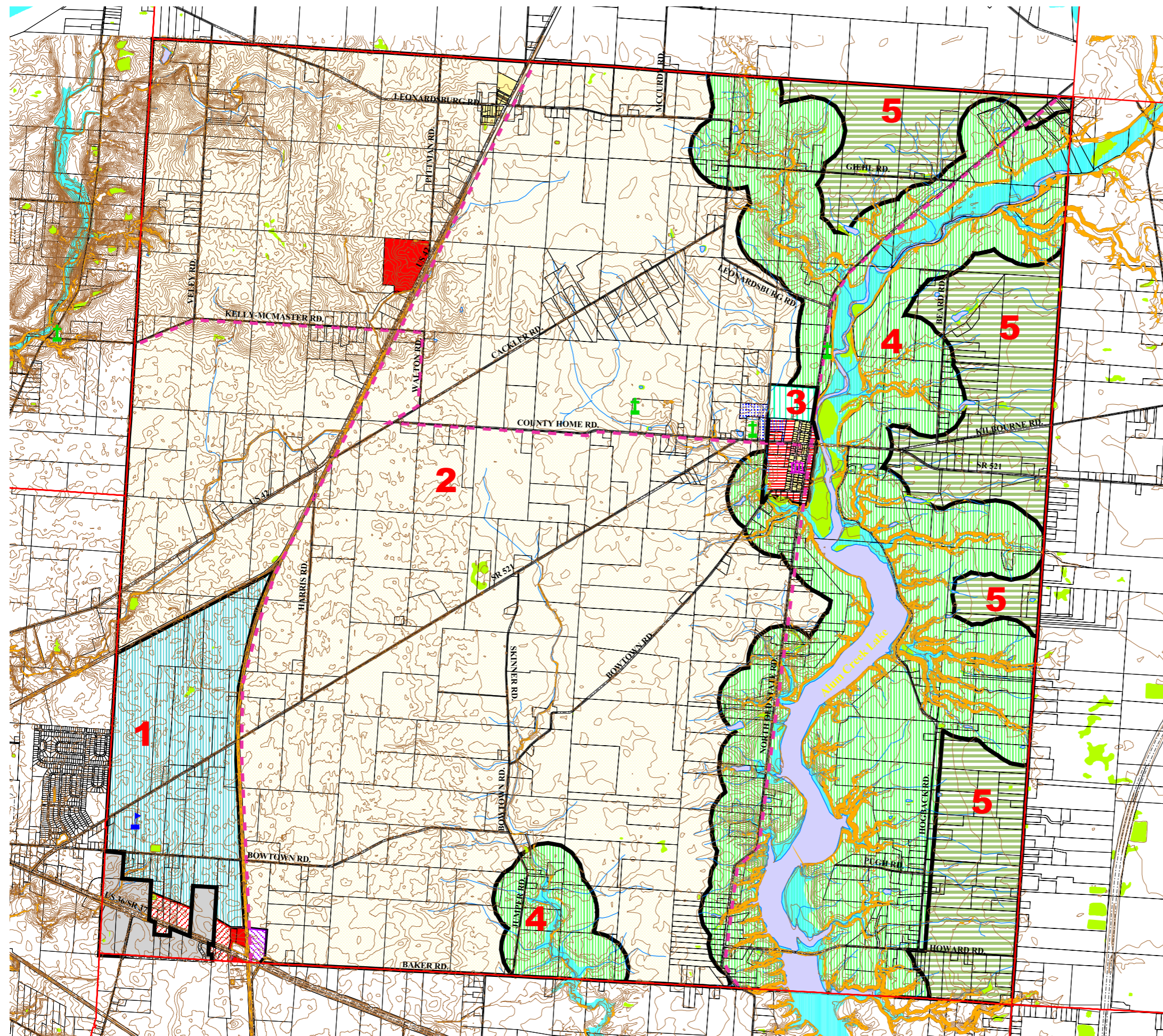


# Brown Township Comprehensive Plan Adopted 7/10/2001



- Township Boundaries
- Township Hall
- ▶ Schools
- + Cemetery
- Centerlines of Roads
- Proposed Bikeway (MORPC Draft Sept. 2000)
- Slopes**
- Slope > 20%
- Topography
- Property Lines
- Road ROW
- Streams
- Water
- Township lands
- Wetlands (NWI)
- Potential Twp. Park/Rec. Area
- Floodplain**
- 100-YEAR FLOOD PLAIN
- 500-YEAR FLOOD PLAIN
- Existing Zoning**
- Farm Residence District
- Low Density Residential Distri
- Medium Density Residential District
- Planned Residential District
- Neighborhood Office District
- Neighborhood Commercial Distri
- Planned Commercial and Office
- Industrial District
- Planned Industrial District
- City of Delaware
- River
- Road
- Planning Areas and Proposed Land Use**
- Planned Commercial and Office district (39 Acres)
- Planned Industrial District (23 Acres)
- Delaware City (138 Acres)
- 1 - Suburban Growth District (1du/2ac w/o san sewer or 1.25du/1ac w san sewer) (778 acres)
- 2 - Agricultural Heartland (1du/2ac) (10002 Acres)
- 3 - Old Kilbourne Village District (1du/2ac w/o san sewer or 2du/ac w san sewer) (107 Acres)
- 4 - Critical Resource District (1du/5ac) (4068 Acres)
- 5 - Estate Conservation District (1du/3ac) (1474 Acres)



0 1000 2000 3000 4000 5000 6000 Feet

Scale: 1" = 3000'

Prepared by: Delaware County Regional Planning Commission (740-833-2260)  
 Topo & Parcel information provided by the Delaware County Auditor's Office DALIS project  
 further information is available by contacting the  
 DALIS project Office (740-833-2900)  
 (Printed 12/15/2004)