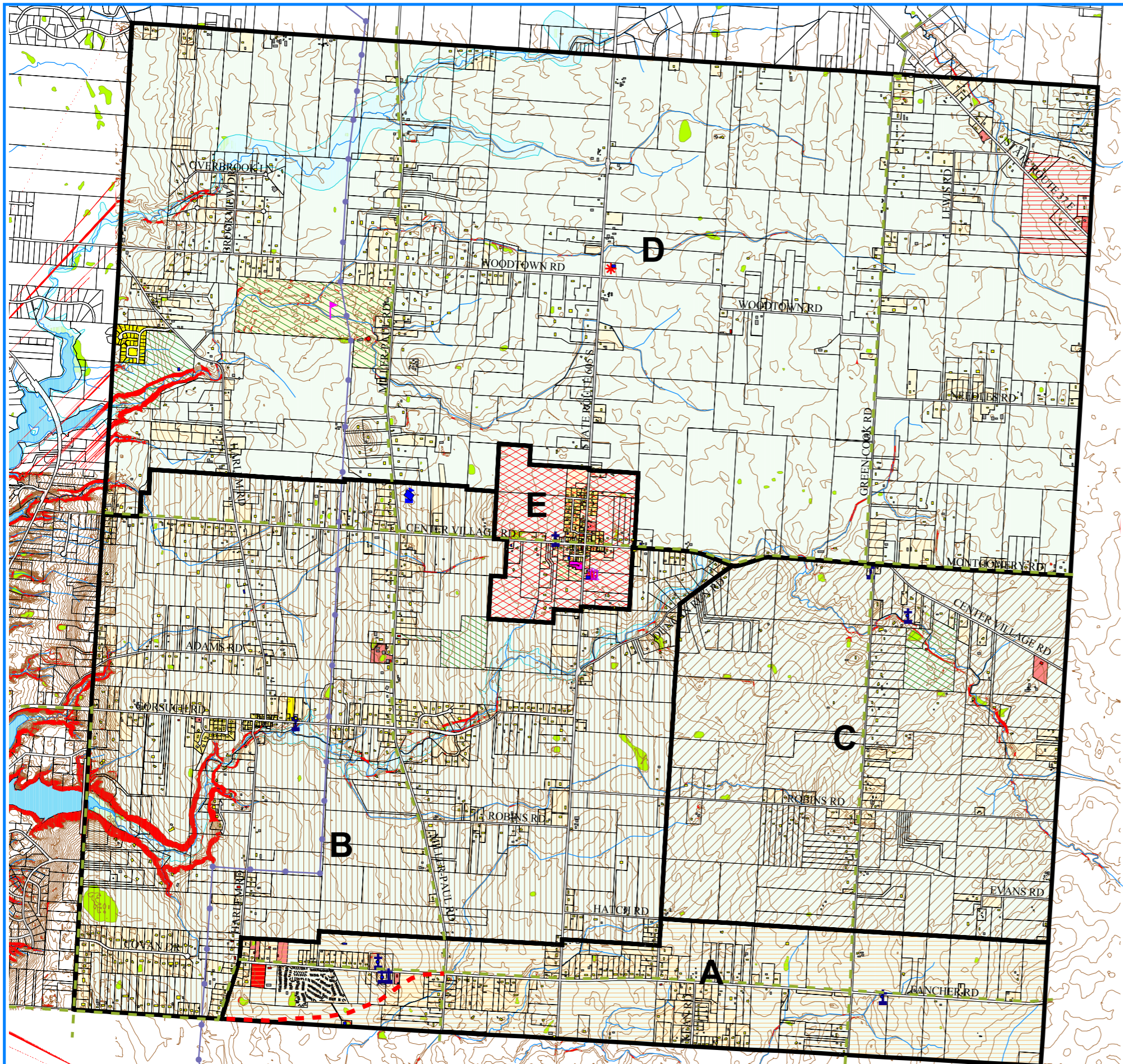


Harlem Township

Comprehensive Land Use Plan

Adopted January 23, 2008



- Township Hall
- Fire/emergency
- Cemeteries
- Schools
- Golf Courses
- Parks
- Power Poles
- Power Lines
- Railroad
- Road Right of Way
- Slope > 20%
- Property Lines
- Rivers/Lakes
- Streams / Drainage Courses
- Contour Lines
- Conceptual bikeways from MORPC data
- Conceptual connection between Fancher and Smothers - not alignment
- 100-Year Floodplain
- Recreational uses (encourage preservation)
- Wetland (National Wetland Inventory)

Planning Sub Areas/Proposed Land Use

- A** Single-family at .5 units/acre (2-acre lots) without centralized sewer; or 2 dwelling units/net developable acre (NDA) with sewer.
- B** Single-family at .5 units/acre without centralized sewer; or Conservation Subdivisions at 1 unit/NDA with centralized sewer.
- C** Single-family at .5 units/acre without centralized sewer; or Conservation Subdivisions at .75 units/NDA with centralized sewer.
- D** Single-family at .5 units/acre (2-acre lots) or Conservation Subdivisions at the underlying density.
- Planned Industrial/Commercial.
- E** Mixed use with village design elements at 2 units/acre for residential. (see Center Village detail)

Harlem Township Zoning

- Agricultural Residential District
- Farm Residential District
- Low Density Residential District
- Planned Residential District
- Neighborhood Office District
- Neighborhood Commercial District
- Planned Commercial and Office District
- Industrial District
- Planned Industrial District
- River
- Road



0 1000 2000 3000 4000 Feet

Map Scale: 1" = 3000'

Prepared by: Delaware County Regional Planning Commission (740-833-2260) www.dcrpc.org
Original Data Provided by Delaware County Auditor's Office DALIS Project
(Contours, Hydrology, Parcels, Road Centerlines, Township Boundary, and Road Right of Way.)
(740-833-2070)

(Printed 09/12/2008)